

# scs06 WALLLIGHT



## INSTALLATION GUIDE

ABBA LIGHTING USA

# SCS06 WALLLIGHT



**STAINLESS  
STEEL**

## FINISH

**Black**



**Silver**



**BULB:**

**2 MR16**



Thank you for choosing our high-quality product. To ensure the best possible experience, please take a moment to carefully read and follow all instructions before assembly, installation, and use. Doing so will not only guarantee proper function and safety but also help you maximize the full potential of this exceptional product. We truly appreciate your business and are honored to be your trusted provider of top-notch products!



YOUTUBE VIDEO  
INSTALLATION GUIDE



WEBSITE



CATALOG



(800) 360-2960



ABBALightingUSA@gmail.com



7701 Alabama Ave, Canoga Park, CA 91304

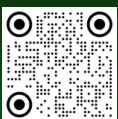
# WARNING

## TO REDUCE THE RISK OF FIRE OR INJURY TO PERSONS:

- ✔ Please exercise caution when using the lamp, as it tends to HEAT up rapidly. We recommend taking necessary safety measures to ensure optimal usage.
- ✔ For your safety, please refrain from touching the HOT lens, guard, or enclosure. We recommend waiting for the product to cool down before handling it.
- ✔ To prevent any fire hazards, please ensure that the lamp is kept away from materials that may easily catch fire. We appreciate your cooperation in maintaining a safe and secure environment.
- ✔ For safety reasons, we recommend that only a qualified professional install this electrical product.
- ✔ Before attempting to install this unit, ensure all power connections are off for your own safety.

# WARRANTY

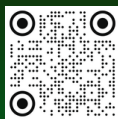
- We stand behind the quality of our product and offer a 3 Year warranty. Kindly ensure that you keep the proof of purchase as it will be required for any warranty claims.
- Warranty will be void if there is any damage due to improper usage or modification to the fixture.
- Failure to comply with the instruction in this manual may increase the risk of damage or injury and will void warranty.



YOUTUBE VIDEO  
INSTALLATION GUIDE



WEBSITE



CATALOG



(800) 360-2960



ABBALightingUSA@gmail.com



7701 Alabama Ave, Canoga Park, CA 91304

# CAUTION:

**FIXTURE(S) MUST BE INSTALLED IN ACCORDANCE WITH ALL LOCAL CODES AND ORDINANCES.**

**DO NOT INSTALL WITHIN 10 FEET OF A POOL, SPA OR FOUNTAIN**

## PRODUCT OVERVIEW

### **SCS06 Stainless Steel Wall Light 12V MR16 Up & Down Sconce | Heavy-Duty 305 Stainless Steel | IP65 Outdoor Rated**

Elegant, durable, and engineered for enduring performance, the SCS06 Stainless Steel Wall Light by Abba Lighting USA elevates both residential and commercial spaces with tailored illumination and architectural integrity. This premium wall fixture offers dual-directional MR16 lighting in a robust cylindrical form, designed to create dramatic light accents while withstanding outdoor conditions.

#### **SOLID 305 STAINLESS STEEL HOUSING:**

Crafted from marine-grade stainless, the SCS06 resists corrosion and stains while maintaining a polished surface finish—ideal for coastal areas, poolsides, or commercial exteriors.

#### **IP65 WATERPROOF CONSTRUCTION:**

Fully sealed against dust and water jets, this sconce offers reliable outdoor performance even in severe weather conditions.

#### **DUAL BULB CONFIGURATION:**

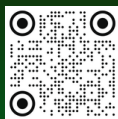
Equipped with two MR16 bi-pin sockets (bulbs not included), this fixture delivers up-and-down lighting—casting architectural shadows and welcoming glows without glare



YOUTUBE VIDEO  
INSTALLATION GUIDE



WEBSITE



CATALOG



(800) 360-2960



ABBALightingUSA@gmail.com



7701 Alabama Ave, Canoga Park, CA 91304

# CAUTION:

**FIXTURE(S) MUST BE INSTALLED IN ACCORDANCE WITH ALL LOCAL CODES AND ORDINANCES.**

**DO NOT INSTALL WITHIN 10 FEET OF A POOL, SPA OR FOUNTAIN**

## CUSTOMIZABLE ILLUMINATION:

Use MR16 bulbs in 3W–7W outputs and choose color temperatures from 2700 K to 5000 K or even colored bulbs for tailored moods.

Specification	Details
Material	Heavy-Duty 305 Stainless Steel
Finish Options	Stainless Steel or Black
Bulb Type	(2) MR16 12 V LED – Sold Separately
Color Temperatures	2700 K / 3000 K / 4000 K / 5000 K (plus RGBCW options)
Voltage Requirement	12 V AC/DC Low Voltage
Dimensions	6.5" H × 2.5" W × 3.5" D
Waterproof Rating	IP65 – Weatherproof Outdoor Use
Includes	Wall Back Plate & Mounting Hardware



YOUTUBE VIDEO  
INSTALLATION GUIDE



WEBSITE



CATALOG



(800) 360-2960



ABBALightingUSA@gmail.com



7701 Alabama Ave, Canoga Park, CA 91304

# CAUTION:

**FIXTURE(S) MUST BE INSTALLED IN ACCORDANCE WITH ALL LOCAL CODES AND ORDINANCES.**

**DO NOT INSTALL WITHIN 10 FEET OF A POOL, SPA OR FOUNTAIN**

## IMPORTANT SAFETY INFORMATION

To ensure optimal performance and safety, always use our fixtures **ONLY** with a low-voltage landscape transformer. This transformer reduces the voltage from 120V to 12V, making it safe and suitable for outdoor use. Failure to follow these guidelines may result in electrical hazards or damage to the fixture.



**3000K**



**4000K**



**5000K**



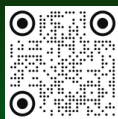
**RGBCW**



YOUTUBE VIDEO  
INSTALLATION GUIDE



WEBSITE



CATALOG



(800) 360-2960



ABBALightingUSA@gmail.com

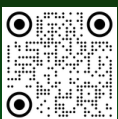


7701 Alabama Ave, Canoga Park, CA 91304

# INSTALLATION GUIDE FOR SCS06

## Installation Guide

- Switch off the power supply before beginning installation.
- Remove the mounting plate and fixture shade components.
- Position the mounting bracket on the wall, mark the fixing points, and drill the required holes.
- Insert anchors where needed and secure the bracket firmly using suitable screws.
- Prepare the supply cable and make the necessary wiring connections securely.
- Attach the fixture body to the mounted backplate.
- Confirm that all wiring and factory connections are tight and secure.
- Restore power and test the fixture.



YOUTUBE VIDEO  
INSTALLATION GUIDE



WEBSITE



CATALOG



(800) 360-2960



ABBALightingUSA@gmail.com

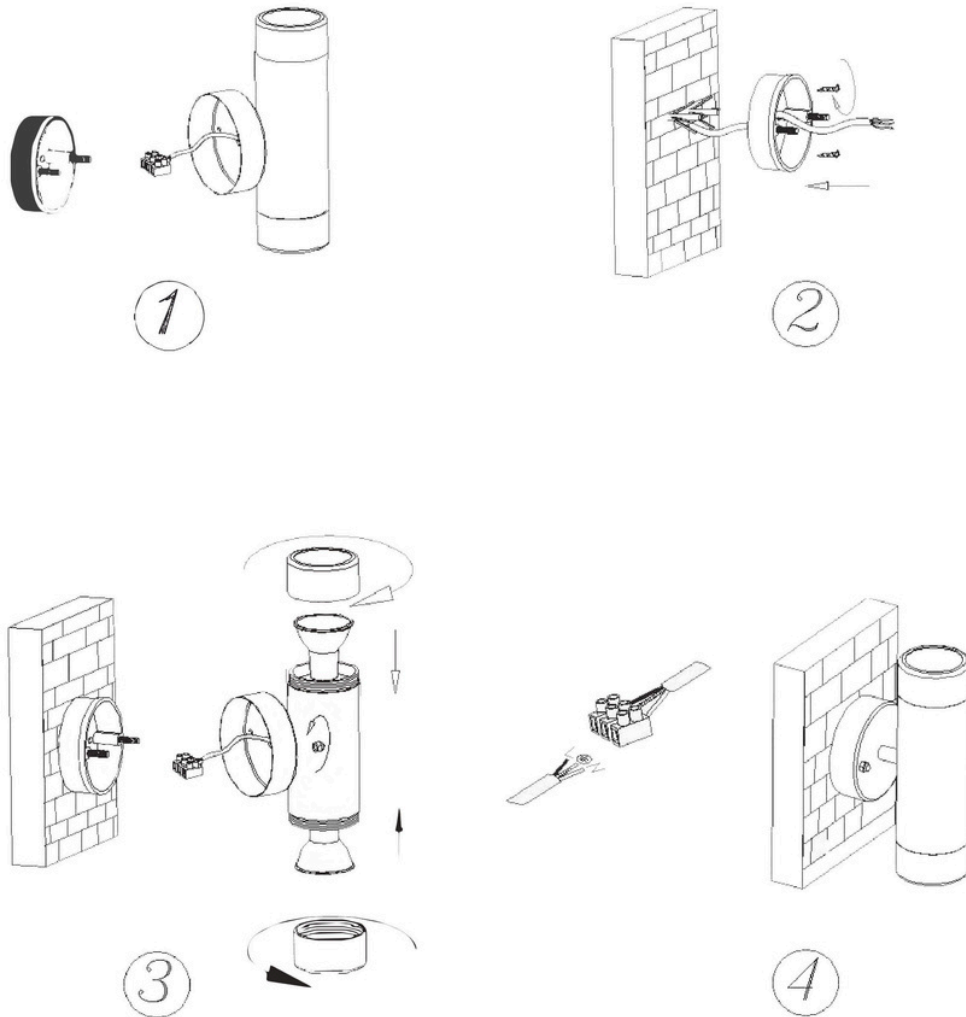


7701 Alabama Ave, Canoga Park, CA 91304

# INSTALLATION GUIDE FOR SCS06

## Installation Instructions

**ABBA**  
LIGHTING USA



Installers are reminded to check all factory connections to ensure they have not become loose during transportation.

### Install/Replace Bulb

Loosen the lock screw to remove the glare guard. Then remove the inner shield to expose the bulb. Replace it with the correct wattage and type marked on the fixture label. Then reinstall the inner shield and glare guard.

**IMPORTANT:** Halogen bulbs must be protected from moisture and dust at all times. Always reinstall shield when removed.



YOUTUBE VIDEO  
INSTALLATION GUIDE



WEBSITE



CATALOG



(800) 360-2960



ABBALightingUSA@gmail.com



7701 Alabama Ave, Canoga Park, CA 91304

# INSTALLATION GUIDE FOR SCS06

## Power On & Final Adjustments

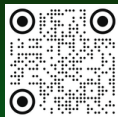
- Turn on the power to test the fixture.
- Make any final angle adjustments to ensure optimal lighting coverage.
- Verify proper operation before completing the installation.
- Do not exceed the maximum wattage specified for the fixture to prevent overheating or damage.
- Regularly inspect and maintain your lighting system to ensure long-term reliability.



YOUTUBE VIDEO  
INSTALLATION GUIDE



WEBSITE



CATALOG



(800) 360-2960

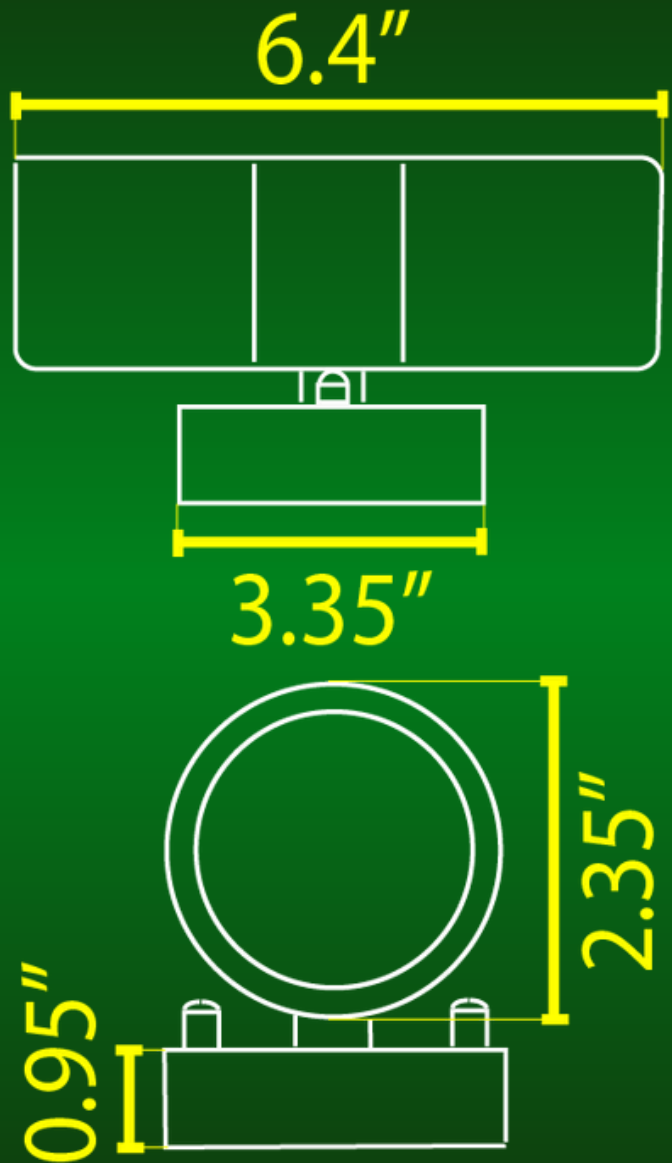


ABBALightingUSA@gmail.com



7701 Alabama Ave, Canoga Park, CA 91304

# INSTALLATION GUIDE FOR SCS06



YOUTUBE VIDEO  
INSTALLATION GUIDE



WEBSITE



CATALOG



(800) 360-2960



ABBALightingUSA@gmail.com



7701 Alabama Ave, Canoga Park, CA 91304

# INSTALLATION GUIDE FOR SCS06

## MAINTENANCE TIPS

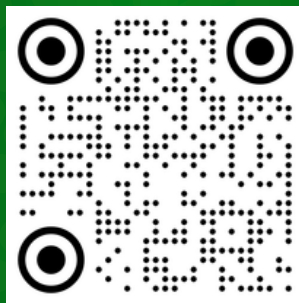
- **Regular Inspection:** Periodically check the fixture to ensure they are still securely mounted and functioning correctly.
- **Surface Maintenance:** Monitor the mounting surface.

## SAFETY PRECAUTIONS

- Always wear appropriate safety gear, such as gloves and safety glasses, during installation.
- Ensure the mounting surface is capable of supporting the weight of the lighting fixture.

## ADDITIONAL RESOURCES

For a detailed video tutorial on how to install, visit our YouTube channel and search for "SCS06"



Please visit our website for more of our products.

[www.ABBALightingUSA.com](http://www.ABBALightingUSA.com)



YOUTUBE VIDEO  
INSTALLATION GUIDE



WEBSITE



CATALOG



(800) 360-2960



ABBALightingUSA@gmail.com



7701 Alabama Ave, Canoga Park, CA 91304

# SCS06

WALL LIGHT

