

Instruction Manual

LED WELL LIGHT

DM52



DMS52



DM53



— Reminder

Thanks for your using our product!
Please read the instruction manual before installation and keep it for future reference.

— Warning

SAFETY INSTRUCTION



READ CAREFULLY BEFORE INSTALLING FIXTURE. PLEASE KEEP THIS MANUAL FOR FUTURE USING.

Fixtures must be installed in accordance with the local codes.

Fixture should be used "ONLY" with low voltage landscape power units that do not exceed 23A,14V. the power units reduce the voltage from 120V to 12 volts.

To avoid electrical shock, disconnect the power unit before installation or service.

MAKE CERTAIN POWER OFF BEFORE INSTALLING OR MAINTAINING FIXTURE.

CHECK THAT VOLTAGE IS COMPATIBLE WITH FIXTURE DRIVER, USE APPROVED CONNECTORS FOR ALL ELECTRICAL CONNECTIONS.

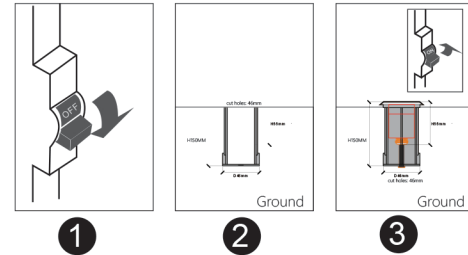
MAINTENANCE CAUTION



1. Review the diagrams before beginning, and make sure fixture is grounded properly.
2. For lighting controls, using functioning correctly.
3. Turn power off and wait for fixture cooling to operate.
4. Maintenance must be done by professionals.

— installation guide A:

1. Turn off power before installation
2. Please Cut holes in ground ,according black tube size
3. Put the Light into Tube. try to make it firm vertical mounting
4. Please ensure the light cable wires input volts are 12V ac/dc
5. Turn on power



— Technical Parameters

WATTS	3w
Input voltage	AC/DC 12v
power Frequency	50/60Hz
CRI	Ra>70
Beam Angle	45°
System Efficacy	75lm/w (CCT=6000K/ 3000K)
Net weight (kg)	0.25

